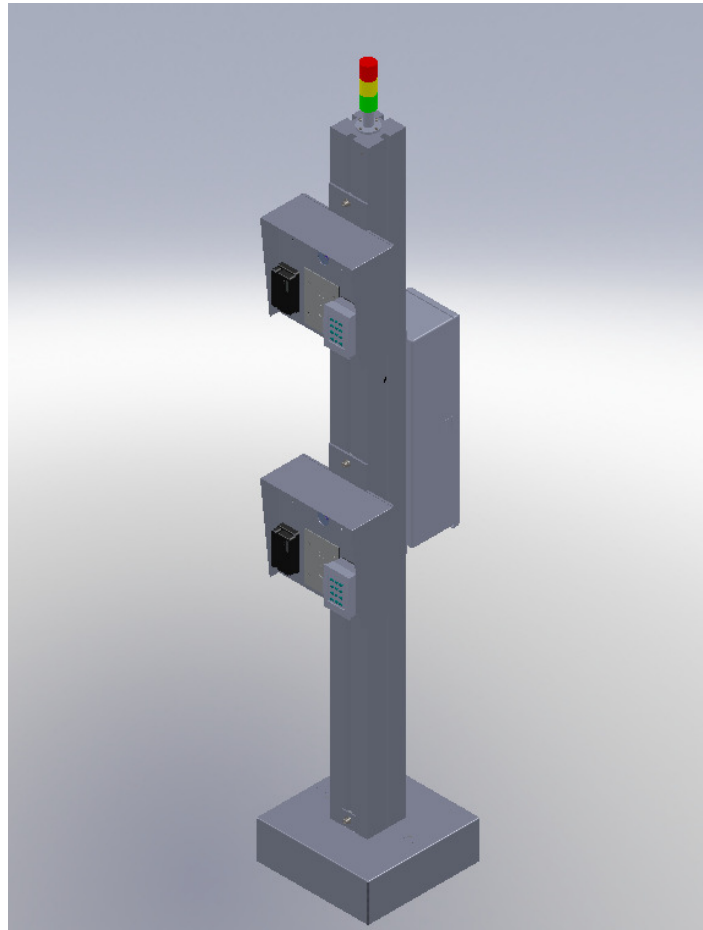


SERIES 8500
INTEGRATED PERSONNEL & VEHICLE ENTRY CONTROL



ENTRY CONTROL ELEMENT 34

Entry Control Element 34 is for personnel access in an automobile, motorcycle or truck with a pre-approved bar-code, keypad, smart card, or prox card identification at two levels to accommodate height of vehicle with traffic control Go/No Go lights. The Element includes two CCTV cameras for video assessment and recording and two intercoms for two way communications with the control center.

Barcode Swipe Reader

Dimensions:

4.6" L x 2.4" W x 1.4" H

Weight:

6 ounces (170.1 grams)

Temperature:

-40°C to +85°C standard

Power Consumption:

5V 145mA typical 245 max.
12V 90mA typical 140 max.
24V 45mA typical 75 max.

Barcode Scanning Speed:

3"- 30" per second
(7.62 cm -76.2 cm/sec)

Symbologies:

Code 39, 2 of 5, 1 2 of 5,
Code 128, Codabar,
EAN13, UPCA

Smart Card Reader w/ keypad

Dimensions:

4.8" (12.2cm) x 3.3 " (8.4cm) x 1.1 " (2.5CM)

Weight:

10 ounces (283 grams)

IP55 Certified

Power Consumption:

5-16VDC Linear 85mA

Read Range:

Up to 4" (10.0 cm)
(7.62 cm -76.2 cm/sec)

Output Formats:

Wiegand, Clock-Data

FIPS 201 Certification: Yes

Driver Camera

Type:

High Resolution Wide Dynamic Range
Mini Square Color Camera

Dimensions:

1.73" (44mm) X 1.73" (44mm) x .05" (12.7mm)

Weight:

2.8 Oz (80 grams)

Power Consumption:

12VDC @ <3.4 watts

Environmental Ratings:

Operating temp : 14°F (-10°C) to
131°F (55°C)

IP Door Station

Dimensions:

6.4" (16.3cm) x 4.5" (11.4 cm) x 1.9" (4.8)

Power Consumption:

IEEE802.3af Compliant PoE or 12VDC
@ 400ma

Network Connection:

10Base-T / 100Base-TX

Finish:

Brushed 11 gauge Stainless Steel

Environmental Ratings:

IP65 Rated

Stack Status Lights

Dimensions:

2 " (50mm) Dia x 10" (254 mm) H

Material:

Heavy Duty Polycarbonate

Power Consumption:

12 & 24 V AC/DC 95/60mA
Per light

Temperature:

Operating : -25 to + 50C

Environmental Ratings:

UL Type 4/4x/13 & IP65

Element Pole

Dimensions:

5" Sq x 84" H

Weight:

37.7 lbs

Material:

Aluminum 6063-T6 T-Slot extruded
pole

Finish:

Choice of RAL 9010, 9011, or 8008
powder coat.
(Pure White, Graphite Black, and
Olive Brown, respectively)

Contact:

ECSI International, Inc.
790 Bloomfield Avenue
Bldg. C-1, Clifton, NJ USA 07012
Tel: (973) 574-8555
Fax: (973) 574-8562
ecsi@ecsiinternational.com
www.ecsiinternational.com



ISO 9001:2008 Registered